



* Technical data and features subject to change without notice

Pumping unit technical data

		HP1808ECX
Max. theoretical output	m ³ /h	180
Max. pressure on concrete	bar	83
Concrete cylinders (diam. x stroke)	mm	260 x 2100
Concrete hopper capacity	l	600
Hydraulic circuit		chiuso

Super compact machine mounted on 12x4 6300* wheelbase trucks for excellent maneuverability.

Contained stabilisation dimensions for easy placement in all types of job sites.

Control System with pumping unit HP1808ECX

Smartronic Silver

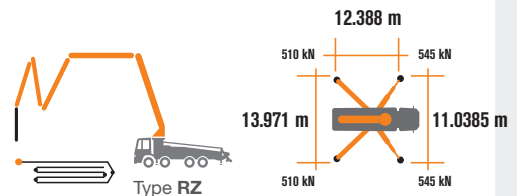
Integrated color LCD

Counters

Pumping unit management

Diagnostics

Capsense rear panel



Placing boom technical data

		B5RRZ 63/58
Diametro tubazioni	mm	125
Max. altezza verticale	m	62,2
Max. distanza in orizzontale (dal centro dell'asse di rotazione)	m	58,1
Distanza netta orizzontale	m	51,9
Min. altezza d'apertura		15,3
Numero di sezioni		6
Angolo apertura 1 ^a sez.		90°
Angolo apertura 2 ^a e 3 ^a sez.		180°
Angolo apertura 4 ^a sez.		245°
Angolo apertura 5 ^a sez.		204°
Angolo apertura 6 ^a sez.		90°
Angolo di rotazione		+/-270°
Lunghezza tubo terminale in gomma	m	3

ASC nella dotazione di serie



The automatic continuous verification of the center of gravity of the machine guarantees the maximum safety of boom movement and the maximum possible coverage of the job area, even with partial opening of the stabilisation.



MBE
Maximum boom extension control



Automatic RPM Management



STEELTECH Series K63L

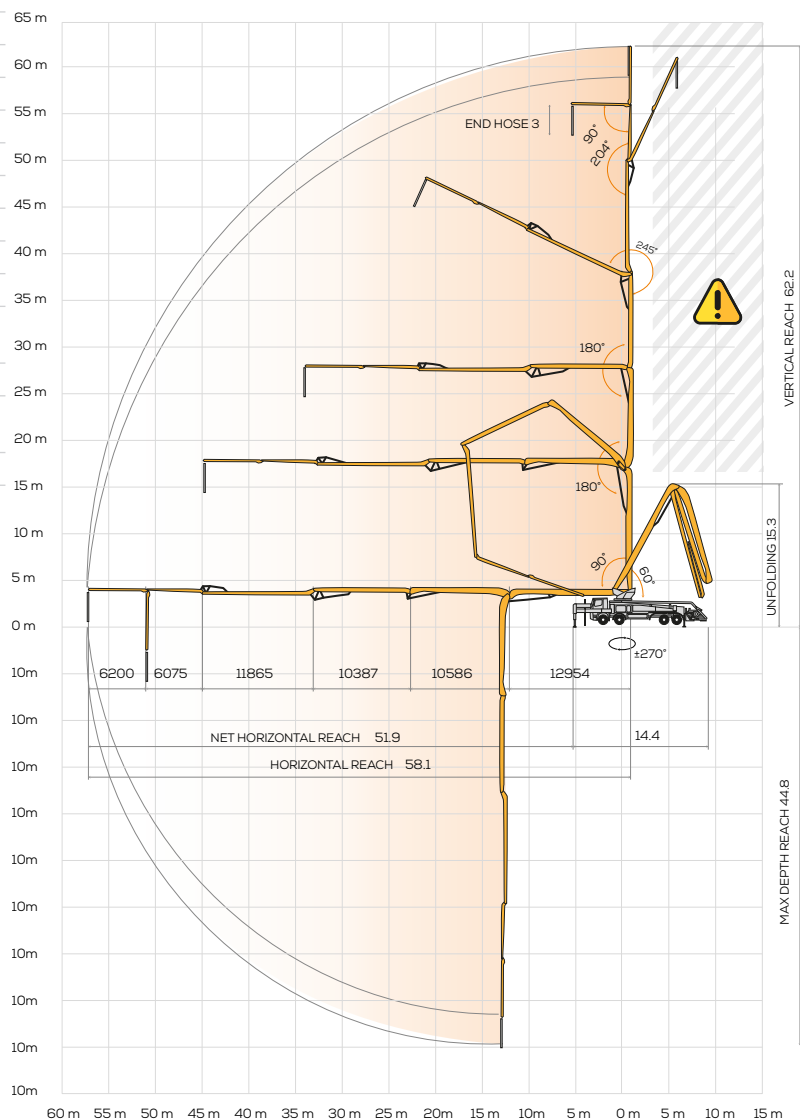
Standard Equipment

- Front "X" style outriggers for a quick set-up and easy pump placement in narrow areas
- Driven by PTO or gear box
- Boom control by means of "Load Sensing" proportional distributor
- Safety device upon opening of concrete discharge door and hopper grille
- Emergency device for pumping group
- 2 Hetriconic proportional radio controls with 3 manipulators
- Emergency radio control cable 20 m
- Plastic water tank with 600-litre capacity
- Medium pressure water pump (50 l/min - 50 bar)
- LED lights for stabilisation and hopper lighting
- Double layer piping with chromium carbide inserts on the entire piping line
- Washing accessories
- High resistance of the components most subject to wear ("S" valve, wear plate, compensating ring)
- Declaration of conformity supplied with the user and maintenance manual

Main Options

- Smartronic Gold (Smartronic Silver + ASC Advanced Stability Control)
- Smartronic Advanced: In addition to the Smartronic Gold functions, provides ASC2.0 stability control, ABC boom oscillation control (Antibouncing), automatic boom opening and closing. Includes radioremove control Hetriconic or HBC with display.**
- Easytronic Gold (Easytronic Silver + LSC Light Stability Control)
- Automatic boom opening and closing
- Centralized boom lubrication system
- Concrete shut-off valve
- High pressure water pump 28l / 120 bar
- Radio remote control: Hetriconic or HBC equipped with display
- Straight concrete piping on double layer boom with high wear-resistance chromium carbide inserts CIFA LLT Long Life Top
- Wide choice of customer personalization colours
- *Over 100 options available; details available on truck pumps optional booklet**

Distribution boom B5RRZ 63/58



Advanced Stability Control 2.0



Antibouncing



Boom automatic opening

Smartronic Video



CIFA S.p.A. / Via Stati Uniti d'America, 26 / 20030 SENAGO (MI) / ITALY
Tel. +39 02 990 131 / sales@cifa.com



cifa.com

